

\$339,900 - 5610 Prairie Ridge Avenue, Blackfalds

MLS® #A2253108

\$339,900

3 Bedroom, 2.00 Bathroom, 1,301 sqft
Residential on 0.07 Acres

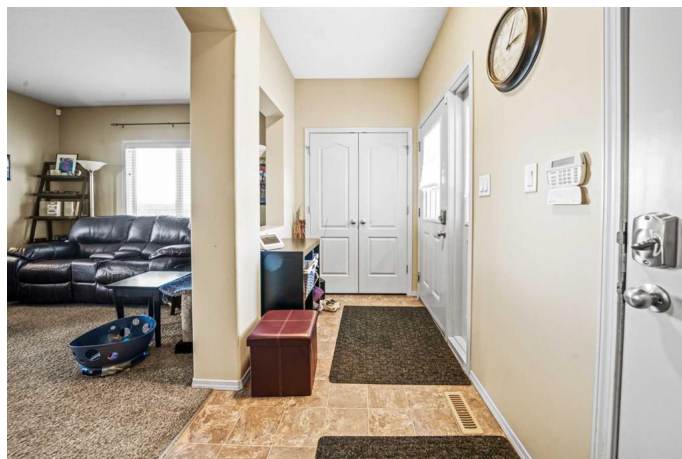
Panorama Estates, Blackfalds, Alberta

Welcome to this BEAUTIFUL 3-bedroom townhome, perfectly situated in a family friendly neighborhood, featuring 2 bathrooms and a cozy functional floorplan, this home offers both comfort and practicality. The neutral, warm tones throughout create an inviting atmosphere, ready for your Personal touch. Enjoy the convenience of a single front attached garage and a fully fenced yard-perfect for kids, pets or simply relaxing outdoors. Located directly across from a children's park, this property makes an ideal choice for a first-time buyer or young family looking for a wonderful place to call home. The primary bedroom is spacious and offers a large walk-in closet. The basement is undeveloped; however this is where your laundry and utility room are located. Build more equity in your jeans by developing this space to your own specific needs. NO CONDO FEE'S!! Affordable and adorable best describe this home!

Built in 2008

Essential Information

MLS® #	A2253108
Price	\$339,900
Bedrooms	3
Bathrooms	2.00
Full Baths	1
Half Baths	1



Square Footage	1,301
Acres	0.07
Year Built	2008
Type	Residential
Sub-Type	Row/Townhouse
Style	2 Storey
Status	Active

Community Information

Address	5610 Prairie Ridge Avenue
Subdivision	Panorama Estates
City	Blackfalds
County	Lacombe County
Province	Alberta
Postal Code	T4M 0C2

Amenities

Parking Spaces	2
Parking	Concrete Driveway, Front Drive, Garage Door Opener, Garage Faces Front, Insulated, Single Garage Attached
# of Garages	1

Interior

Interior Features	Breakfast Bar, Closet Organizers, Open Floorplan, Pantry
Appliances	Dishwasher, Garage Control(s), Microwave Hood Fan, Refrigerator, Stove(s), Washer/Dryer, Window Coverings
Heating	Forced Air, Natural Gas
Cooling	None
Has Basement	Yes
Basement	Full, Unfinished

Exterior

Exterior Features	Private Yard
Lot Description	Back Lane, Back Yard, City Lot, Landscaped, Rectangular Lot, Standard Shaped Lot
Roof	Asphalt Shingle
Construction	Brick, Concrete, Vinyl Siding, Wood Frame
Foundation	Poured Concrete

Additional Information

Date Listed	September 3rd, 2025
Days on Market	3
Zoning	R2

Listing Details

Listing Office	RE/MAX real estate central alberta
----------------	------------------------------------

Data is supplied by Pillar 9â„¢ MLS® System. Pillar 9â„¢ is the owner of the copyright in its MLS® System. Data is deemed reliable but is not guaranteed accurate by Pillar 9â„¢. The trademarks MLS®, Multiple Listing Service® and the associated logos are owned by The Canadian Real Estate Association (CREA) and identify the quality of services provided by real estate professionals who are members of CREA. Used under license.