

\$549,900 - 42 Hallgren Drive, Sylvan Lake

MLS® #A2231907

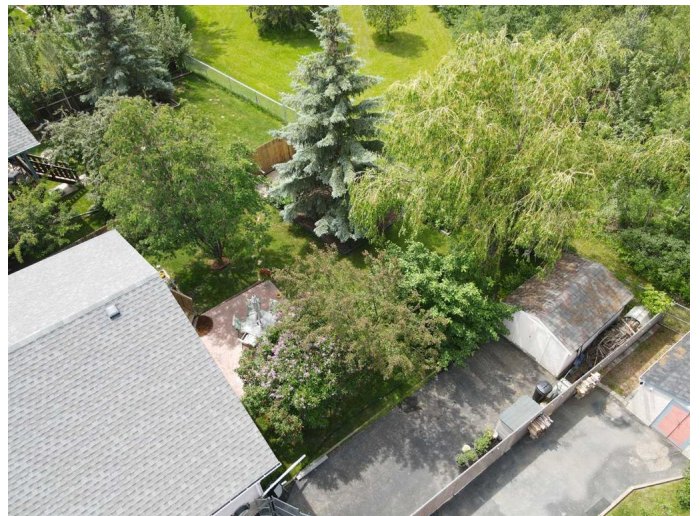
\$549,900

6 Bedroom, 3.00 Bathroom, 1,462 sqft
Residential on 0.18 Acres

Hewlett Park, Sylvan Lake, Alberta

Welcome to this exceptional 6-bedroom bungalow—a true family retreat that seamlessly blends spacious design and upscale comfort. Set on a generous lot backing onto a beautiful park, the mature trees offer a serene, private backyard sanctuary perfect for gatherings or quiet relaxation. Inside, the bright and open main floor invites effortless entertaining, with gleaming hardwood floors, rich maple cabinetry, and a cozy gas fireplace anchoring the living area. Downstairs, a thoughtfully designed lower level features a second gas fireplace and a superb entertainment hub ideal for movie nights, games, or hosting guests. The home's comforts extend beyond style: central air conditioning, in-slab heating in both the garage and basement, and newer shingles ensure year-round efficiency and ease. The attached true double garage makes winter mornings a breeze. Retreat to the primary bedroom—roomy enough for a king bed and extra storage if needed, a walk-in closet, and a spa-like ensuite boasting dual sinks, a soaker tub, and a separate shower. With six bedrooms (three upstairs, three downstairs), the home offers versatility for family, office space, or hobbies. Combining elegant finishes, modern amenities, and a private park-side setting, this bungalow offers a lifestyle of comfort, convenience, and tranquility.

Built in 1999



Essential Information

MLS® #	A2231907
Price	\$549,900
Bedrooms	6
Bathrooms	3.00
Full Baths	3
Square Footage	1,462
Acres	0.18
Year Built	1999
Type	Residential
Sub-Type	Detached
Style	Bungalow
Status	Active

Community Information

Address	42 Hallgren Drive
Subdivision	Hewlett Park
City	Sylvan Lake
County	Red Deer County
Province	Alberta
Postal Code	T4S1W9

Amenities

Parking Spaces	2
Parking	Double Garage Attached
# of Garages	2

Interior

Interior Features	Kitchen Island, Pantry, Vinyl Windows
Appliances	None
Heating	In Floor, Forced Air
Cooling	Central Air
Fireplace	Yes
# of Fireplaces	2
Fireplaces	Gas
Has Basement	Yes
Basement	Finished, Full

Exterior

Exterior Features	Fire Pit, Garden, Private Yard
Lot Description	Back Yard, Few Trees, Garden, No Neighbours Behind, Pie Shaped Lot, Private
Roof	Asphalt Shingle
Construction	Stucco
Foundation	Poured Concrete

Additional Information

Date Listed	June 25th, 2025
Days on Market	8
Zoning	R1

Listing Details

Listing Office	KIC Realty
----------------	------------

Data is supplied by Pillar 9â„¢ MLS® System. Pillar 9â„¢ is the owner of the copyright in its MLS® System. Data is deemed reliable but is not guaranteed accurate by Pillar 9â„¢. The trademarks MLS®, Multiple Listing Service® and the associated logos are owned by The Canadian Real Estate Association (CREA) and identify the quality of services provided by real estate professionals who are members of CREA. Used under license.