

\$489,990 - 66 Cameron Close, Sylvan Lake

MLS® #A2222933

\$489,990

3 Bedroom, 4.00 Bathroom, 1,462 sqft

Residential on 0.07 Acres

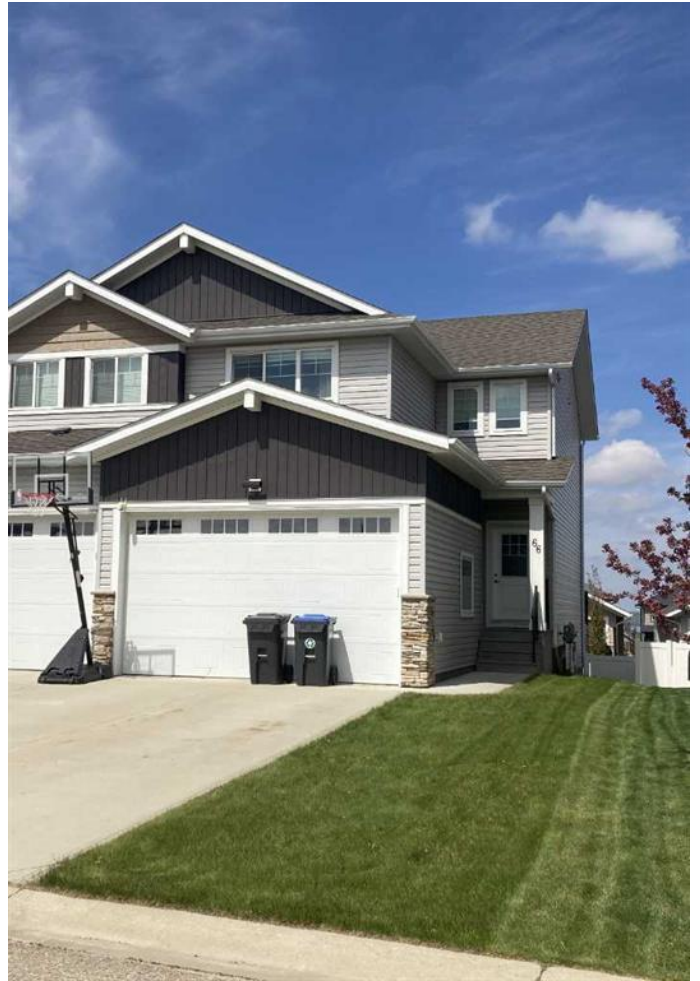
Crestview, Sylvan Lake, Alberta

WELCOME TO THIS EXECUTIVE STYLED WALKOUT HALF DUPLEX IN IMMACULATE CONDITION! The large entrance with a shoe bench that enters into a open floorplan . Stainless steel appliances and lots of natural light make this kitchen very inviting and joins with the eating area and the spacious living room. There is a nice deck off the eating area with plenty of room for your barbecue or smoker. Three bedrooms upstairs, all very spacious, a 4 piece ensuite and a second 4 piece bathroom. Downstairs is fully has quality finishings, a wall fireplace, custom tiled shower and a huge Ikea closet. The walkout leads you to a secluded enclosed hot tub. Fully fenced with shed. The attached garage is insulated and drywalled with a drain and a loft for extra storage.

Built in 2017

Essential Information

MLS® #	A2222933
Price	\$489,990
Bedrooms	3
Bathrooms	4.00
Full Baths	3
Half Baths	1
Square Footage	1,462
Acres	0.07
Year Built	2017



Type	Residential
Sub-Type	Semi Detached
Style	2 Storey, Side by Side
Status	Active

Community Information

Address	66 Cameron Close
Subdivision	Crestview
City	Sylvan Lake
County	Red Deer County
Province	Alberta
Postal Code	T4S 0N5

Amenities

Parking Spaces	1
Parking	Concrete Driveway, Garage Attached
# of Garages	1

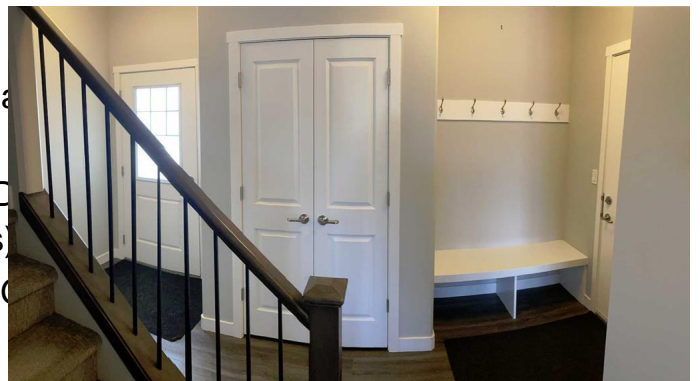
Interior

Interior Features	Central Vacuum, Kitchen Island, Open Floorplan
Appliances	Bar Fridge, Dishwasher, Double Oven, Range, Refrigerator, Stove(s)
Heating	In Floor, Forced Air, Natural Gas
Cooling	None
Fireplace	Yes
# of Fireplaces	1
Fireplaces	Electric
Has Basement	Yes
Basement	Finished, Full

Exterior

Exterior Features	None
Lot Description	Back Yard, Landscaped, Lawn
Roof	Asphalt Shingle
Construction	Wood Frame
Foundation	Poured Concrete

Additional Information



Date Listed	May 20th, 2025
Days on Market	27
Zoning	R5A

Listing Details

Listing Office	Royal LePage Network Realty Corp.
----------------	-----------------------------------

Data is supplied by Pillar 9â„¢ MLS® System. Pillar 9â„¢ is the owner of the copyright in its MLS® System. Data is deemed reliable but is not guaranteed accurate by Pillar 9â„¢. The trademarks MLS®, Multiple Listing Service® and the associated logos are owned by The Canadian Real Estate Association (CREA) and identify the quality of services provided by real estate professionals who are members of CREA. Used under license.